





# ENGINEERING AND CARVING THE ART IN STEEL AND ALUMINUM



[www.zoomfab-qa.com](http://www.zoomfab-qa.com)    ✉ [admin@zoomfab-qa.com](mailto:admin@zoomfab-qa.com)

P.O Box : 31130 Doha - Qatar

Mob : +974 3071 4414, Tel / Fax : +974 4411 9138

follow us on :  

## Table of Contents

|                                             |    |
|---------------------------------------------|----|
| Cover .....                                 | 01 |
| Content .....                               | 02 |
| Our Profile .....                           | 03 |
| Our Vision                                  |    |
| Our Mission                                 |    |
| Our Products                                |    |
| Organizational Chart .....                  | 04 |
| ISO Certification .....                     | 05 |
| Quality Policy .....                        | 06 |
| Company Documents .....                     | 07 |
| What We Do .....                            | 08 |
| Some of our going/ Completed Projects ..... | 12 |
| Project Highlights .....                    | 17 |
| Contact .....                               | 28 |



## Our Profile

**Zoom Fab** is owned and operated by Zoom Construction Group renowned for its accuracy and efficiency in the Construction Sector and has expanded its Capability in the Aluminum and Steel fabrication sector for the manufacturing and installation of all type of Aluminum works including Glazed Windows, Doors, Curtain walls and Structural Glazing and Cladding, Kitchen Cabinets, Handrails and Balustrades all type of decorative aluminum works, Structural steel works, All type of general Steel works including Gates, Grills, Fence, Doors, Parking shades, Ladders, Canopies, Handrails and Balustrades, Substation Doors, Portable Cabin works for the Construction industry.

We are here in the Qatar Market for giving active support for our valuable customers for producing accurately fabricated products which are so necessary for the efficient onsite installation of all types of Aluminum and steel fabrication works.

We are having highly skilled and qualified staff in our employ, and are able to focus a wide range of expertise onto producing a quality standard for all types of fabrications, which has the hallmark of accuracy and uncompromising finishes.

## Our Vision

**Zoom Fab** provides the demand for all types of Aluminum Works, Structural steel works and General type of Steel works in the construction industry. We delivers projects on time and within budget and utilizes quality raw materials, adheres to the standards of engineering practices and guarantees the soundness of the fabrication and erection. Every project is a reflection of excellent workmanship as it employs the best in providing excellent engineering solutions suitable to every clients.

## Our Mission

**Zoom Fab** shall be the preferred fabricator for all type Aluminum works, structural steel works and all type of General Steel works in the construction industry. **Zoom** will serve its clients with utmost professionalism while upholding its core values and maintaining its reputable name in the industry.

## Our Products

Zoom Fab Specialize in the Production and Installation of

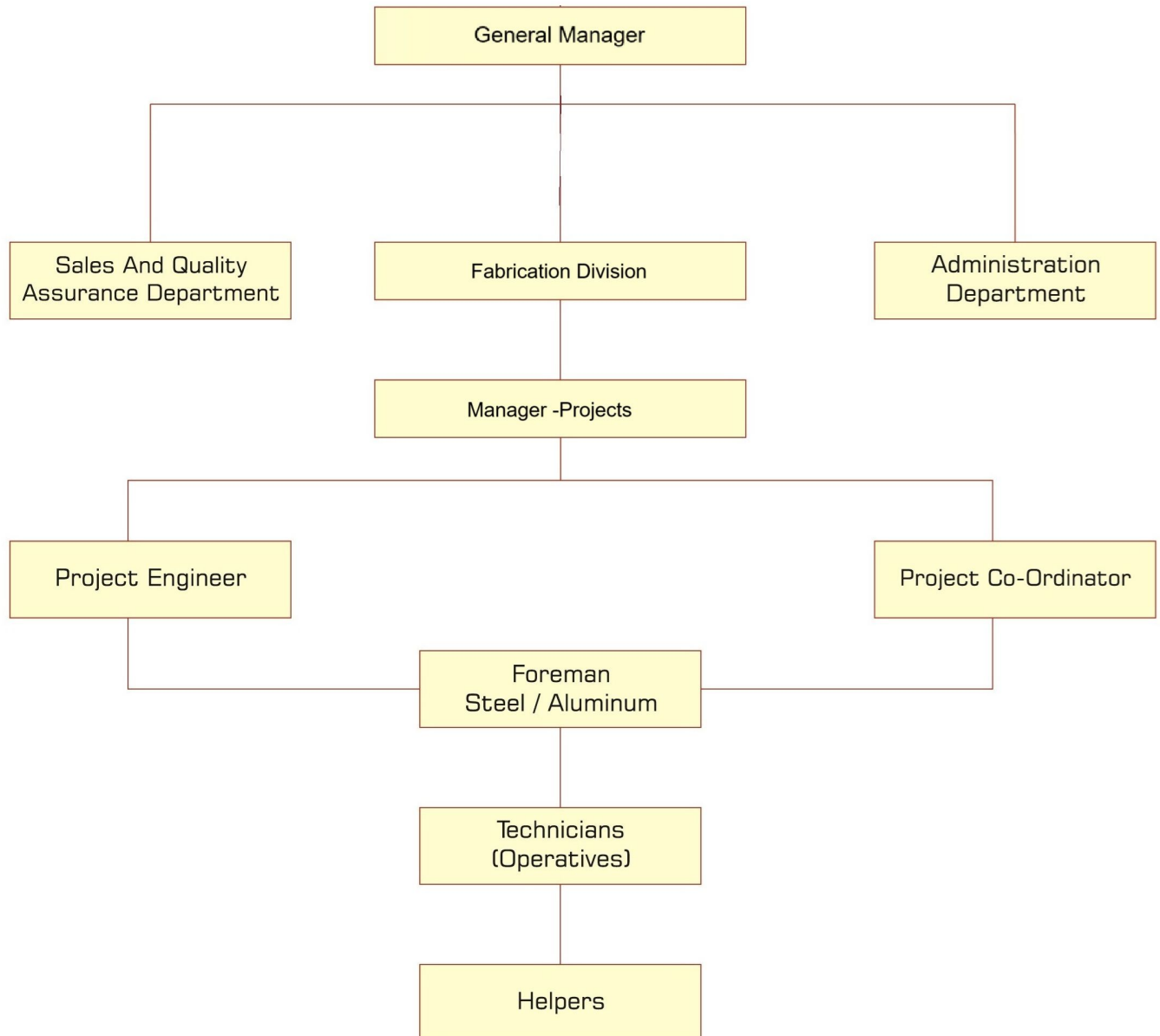
### All types of Aluminum works including

Aluminum Glazed Doors and Windows  
 Aluminum Curtain Walls  
 Aluminum Structure Glaze  
 Aluminum Louver ventilations  
 Aluminum Kitchen Cabinets  
 Skylights and Canopies  
 Aluminum Handrails and Balustrades  
 Automatic Glass Doors  
 Roof Hatches etc

### All types of Steel works including

Structural steel works  
 All type of general Steel works (in Mild Steel ,Galvanized Steel, Stainless Steel)  
 Steel Doors, Gates, Grills, Fences  
 Parking shades  
 Access Ladders  
 Steel stairs and Spiral Stair Case  
 Canopies and Pergolas  
 Handrails and Balustrades  
 Substation Doors  
 Ventilation Louvers and Louver Doors  
 Grating , Chequered plate Platforms Man hole Covers  
 Bollards  
 Portable Cabin works (all types of Site offices, Guard Rooms etc)  
 Supply and Installation of Roll up Shutter Doors  
 Industrial roof ventilations .  
 and fabricated materials as per customer requirements.

## Organizational Chart







We Do Not Sell, We Certify!

# CERTIFICATE

This Certificate has been awarded to



## ZOOM FAB STEEL AND ALUMINUM WLL

Street No 790, Zone No 53, Building No 242,  
P.O.Box: 31130, Doha - Qatar

In recognition of the Organization's Management System  
which complies with

### ISO 9001:2015 (Quality Management System)

The scope of activities covered by this certificate is defined below

**Fabrication, Supply and Installation  
of  
Steel, Aluminum and Glass Products for the Construction Sector**

SYNDICATE OF INTERNATIONAL SYSTEM CERTIFICATIONS

Certificate Number: SIS331121Q056



Issue No.: 01

Date of Initial Registration:  
First surveillance due on:  
Second surveillance due on:  
Expiry Date:  
Re-certification Due on:

|        |      |
|--------|------|
| 08 Nov | 2021 |
| 08 Oct | 2022 |
| 08 Oct | 2023 |
| 07 Nov | 2024 |
| 08 Oct | 2024 |

  
*Managing Director*



**Note:** This certificate is valid only if produced with the  
continuation letter after the surveillance is carried out successfully.



Key Subcontractor Office (SIS):- Quality Administration Consultancy, Post Box No.10495, Doha-Qatar  
Corporate Office (SIS):- SIS Certifications Pvt. Ltd., Unit No. 514, 5<sup>th</sup> Floor, Vipul Business Park,  
Sohna Road, Sector-48, Gurgaon-122018, Haryana, India.  
Email us :- support@siscertifications.com, Contact no:-+ 974 55529618  
Web:- www.siscertifications.com  
The status of this certificate can be verified on "<https://siscertifications.co.in/verify/>"



QS21-0441

REGISTERED  
By  
Qatar General Organization for  
Standardization

## **THE QUALITY POLICY**

We at Zoom FaB are committed and dedicated in achieving the excellence in all our endeavours in compliance to the international quality standards and to the utmost satisfaction of our customers.

It is the policy of the company to maintain a quality system designed to meet the requirements of QCS in pursuit of its primary objectives.

We shall pursue to deliver the best always in our performance. We shall always remain diligent to improve continually our Processes, Procedures and systems through innovative ideas to meet set targets and to become the first choice of our customers in the region. We shall endeavour to nurture an environmental friendly attitude in all our activities.

The company's aim will always be to provide a high standard of work in accordance with the project drawings and documentation on all our projects undertaken.

Our project team has adopted key project goals in each area of quality, Safety, cost and time that are required to be achieved to ensure a successful Project.

We provide an atmosphere of Quality management for all our employees that encourages cent percent customer satisfaction through Zero defects process.

**JARALLA NASSER**

GENERAL MANAGER





## COMPANY DOCUMENTS, (CR & COMPUTER CARD)



وزارة التجارة والصناعة  
Ministry of Commerce and Industry  
دولة قطر - State of Qatar

Registration and Commercial  
Licenses Department

إدارة التسجيل  
والتراخيص التجارية

### مستخرج ببعض بيانات السجل التجاري

تاريخ الطباعة: 2024/09/05



|                    |                          |                      |            |
|--------------------|--------------------------|----------------------|------------|
| رقم السجل التجاري: | 122394                   | رقم التسجيل الضريبي: | 5000113886 |
| الاسم التجاري:     | زوم فاب ستيل اند المنيوم | السمة التجارية:      |            |
| تاريخ انشاء السجل: | 13/09/2018               | تاريخ انتهاء السجل:  | 11/09/2025 |
| الشكل القانوني:    | شركة ذات مسئولية محدودة  | رأس المال:           | 400000     |
| حالة السجل:        | نشط                      | جنسية المنشأة:       | قطر        |
| عدد الفروع:        | 0                        | رقم قيد المنشأة:     | 17-1773-47 |

**معلومات الاتصال**

|               |                |      |
|---------------|----------------|------|
| صندوق البريد: | أرقام الاتصال: | +974 |
|---------------|----------------|------|

### الشركاء

| الاسم                                | رقم الإثبات | رقم السجل | الجنسية | النسبة | الحالة |
|--------------------------------------|-------------|-----------|---------|--------|--------|
| جارالله ناصر جارالله الغفراني المرمي | 28463400286 |           | قطر     | 51     | نشط    |
| بيجوي ليكوسبي                        | 28235632181 |           | الهند   | 49     | نشط    |

### المدرء (المخولون بالتوقيع)

| الاسم                                | رقم الإثبات | رقم السجل | الجنسية | الصفة (الصلاحية)            |
|--------------------------------------|-------------|-----------|---------|-----------------------------|
| بيجوي ليكوسبي                        | 28235632181 |           | الهند   | شريك - صلاحيات كاملة ومطلقة |
| جارالله ناصر جارالله الغفراني المرمي | 28463400286 |           | قطر     | شريك - صلاحيات كاملة ومطلقة |

Page 1 of 2  
رقم السجل : 122394



تشهد غرفة تجارة وصناعة قطر بان المنشأة المذكورة اعلاه سجلت لدينا

Qatar Chamber certifies that the above mentioned establishment has been registered

STATE OF QATAR  
MINISTRY OF INTERIOR  
General Directorate of Passport

دولة قطر  
وزارة الداخلية  
الإدارة العامة للجوازات

**بطاقة قيد المنشأة Establishment Card**

رقم قيد المنشأة: 17-1773-47  
اسم المنشأة: زوم فاب ستيل اند المنيوم

Est. Name : ZOOM FAB STEEL & ALUMINUM  
Sector : COMMERCIAL

تاريخ اول اصدار: 2019-03-19  
تاريخ الصلاحية: 2025-09-03

مدير عام الإدارة العامة للجوازات

2024/09/09 08:072

## What we do

### Fences

Our security fencing provides an aesthetically pleasing yet permanent barrier. Select from the many panels designs that can be fabricated in different sections as per the customer requirement. Fence can be in MS / GI / SS / Al \*with required Finishes. (\* MS -Mild Steel, GI - Galvanized, SS -Stainless Steel, Al-Aluminum -applicable for all products.)



### Gates

Our Security Gate Systems utilize a frame design with, infill panels numerous sizes of square / rectangular mesh patterns or any other shapes as per the customer requirement. The Security gates can be Hinged type or sliding type as per the requirement. Gates can be MS / GI / SS with required Finishes.



### Access Ladders

Our Caged (Hooped) or Uncaged Fixed Access Ladders/Cat Ladders provide safe, easy and economical access for applications in many different environments. Ladders can be in MS / GI / SS / Al with required Finishes.



### Handrails

Our handrails are designed to be grabbed by the hand so as to provide stability or support while ascending or descending stairways and escalators in order to prevent injurious falls. Handrails are typically supported by posts mounted to floors or directly to walls which is used for the internal and external applications. Handrails can be in MS / GI / SS with required Finishes. Balustrades can be in MS / GI / SS or tempered glass according to the design approved by the client.





### Steel Stair Cases

Our Steel Staircase can be straight spiral or curved as per the requirement. The staircases consist of stringers, treads and landings of grating / chequered plate as well as balustrades. Treads can be produced from grating, chequered plate, plate with carpet, wood of different types, marble, concrete. Steel Stair can in MS / GI with required finishes.



### Steel Structures

Steel is a versatile building material, which has led to its inclusion in nearly every stage of the construction process from framing and floor joists, to roofing materials. steel frame system enables architectural and design flexibility that is cost efficient, sustainable, durable and safe with exceptional resistance to fire, corrosion and pest. We do all type of Steel Structures using hot rolled Steel members as per the design and details provided by the client.



### Portable Cabins

We can provide our clients all type of Portable Cabins for the Site offices, Security Cabins, Toilet Blocks, Rest Rooms, etc, providing utmost satisfaction to the clients. Which are popular widely due to their perfect finish, fine aesthetics, and excellent quality. Our product range is using the best grade raw material procured from our reliable vendors in compliance with international quality standards.



### Aluminum Windows

Aluminum windows contribute an excellent thermal and sound insulation .The efficiency of thermal performance in aluminum is comparatively higher than timber or PVC. Durability, Affordability, low maintenance as well as design flexibility make aluminum most popular in the market for the construction industry. Our Aluminum windows can be Glazed /Unglazed with Sliding, Hinged, Awning, Tilt and Turn, fixed options.



# What we do

## Aluminum Doors

The durability, strength, and stability of doors made from aluminium makes them a favourite choice for many property owners especially in the industrial and commercial buildings. Products made from aluminum last for decades. These doors blend well in structures that are already fitted with aluminum windows. They blend together well, creating an exceptionally beautiful finish that lasts long. Our aluminum Doors can be Glazed /Unglazed with Sliding, Hinged, Double action type with Single/ Double Shutters. We can also serve our customers with frameless glass doors for the building entrance or shop front.



## Aluminum / Glass Partitions

A framed partition wall system is a suitable solution for creating rooms, separating work areas and for sectioning sales areas. The unit consists of modules which are easy to install and later to demount or relocate, where necessary. The partition system can be done as per the requirement, details and finish stated by the client.



## Aluminum Louver Window / Doors

A louver is a window blind or shutter with horizontal slats that are angled to admit light and air, but to keep out rain and direct sunshine. The angle of the slats may be adjustable, usually in blinds and windows, or fixed. perfectly fit into this requirement and offer many more benefits for a high-functioning ventilation system. Our Louver windows /Doors can be in Steel /Aluminum as per the client requirement.



## Skylights

Skylights help to not only bring new life to a room, but also improve our health and happiness as well. Natural lighting is an important tool in attaining sustainability. Skylights can offer a home's residents and guests a spectacular natural viewing arena that often provides magnificent views of clouds, brilliant lightning, or a clear, starry night sky. We can provide our customers with attractive skylights according to the requirement.





## Kitchen Cabinets

Our Aluminum kitchen cabinets feature unique designs, styles and colours that incorporate every home owner's preference and personality. Installing these cabinets can bring a unique element to your kitchen's design that will give a face lift to your kitchen. It can with stand all climatic conditions without being affected unlike wooden ones which tend to warp- deviating from their flat form- in humid climates. They are usually very long lasting because they are rigid nature and not prone to breaking, which makes them very economical because they provide great service for a long period of time.



## Aluminum Handrails

Aluminum has properties that make it the ideal choice for many applications: corrosion resistance, high strength, low weight among others. Low maintenance cost made it familiar for the construction industry. Powder coated aluminum systems do not require painting, which gives them a superior long-lasting finish. Handrails are typically supported by posts mounted to floors or directly to walls which is used for the internal and external applications. Our Aluminum Handrails and Balustrades are available in different RAL Colors as per the client request.





### Some of our On-Going / Completed Projects



| Sl. No: | Project Name                                                                        | Nature of work                                                           | Client /Contractor              |
|---------|-------------------------------------------------------------------------------------|--------------------------------------------------------------------------|---------------------------------|
| 1.      | Construction of Boundary wall fence and Gate Villa @ Al-khor                        | (Steel Fence and Gate), Aluminum Works                                   | Private Villa @ Alkhor          |
| 2.      | P-04 Lifting Station @ Ras Abu Fontas                                               | Interior Metal Works                                                     | Cyteco Engg. & Cons.            |
| 3.      | Construction of Wedding Hall Complex at Al Wakrah                                   | Miscellaneous works                                                      | Gulf International Construction |
| 4.      | Villa Project at Al kheesa                                                          | Portable Cabin Site office                                               | Blue Chip Contracting Co.       |
| 5.      | Construction of Villa and Majlis Complex @ Doha                                     | Interior, SS Works, Handrails, Steel Stairs, Ladders                     | Ibrahim Al Hail                 |
| 6.      | CCB and BPC project @ Musherib                                                      | Interior and Civil Works                                                 | Al -Musairie Trd. & Cont.       |
| 7.      | Villa Project @ Duhail                                                              | Interior fit out & Metal works                                           | Red Line Contracting            |
| 8.      | Ware House at Industrial area for Car Garage                                        | Steel Structure, Cladding, Roofing and Aluminum Works                    | Metallic Scan                   |
| 9.      | Compound Villa project @ Bani Hajer                                                 | Steel Works, Access Ladders, Stainless Steel Handrails, Kitchen Cabinets | Blue Chip Contracting Co.       |
| 10.     | Renovation of existing Steel Shades with Ferrari Tensile Shades @ Villa in Ummsalal | Parking Shades                                                           | Evolution Trd. and Cont.        |
| 11.     | Lusail Development Project – CP-07 B                                                | Underground -Civil and Access Cover works                                | QD -SBG                         |
| 12.     | Renovation works for Shop @ Gharafa                                                 | Aluminum Cabinets, Doors and Glass Partitions                            | Evolution Trd. and Cont.        |
| 13.     | Proposed B+G+1 +P Villa + Out Majlis +Covered Parking / Driver Room                 | Aluminum Doors, Stainless Steel Handrails and Roll up Shutter            | Mr. Mohammed Al-Kaabi           |
| 14.     | Villa @ Muaither                                                                    | Glass Partitions and Glass Doors                                         | Mr. Adel Ibrahim                |
| 15.     | Warehouse at Ummsalal                                                               | Aluminum Windows                                                         | Seven Seas Freight Forwarding   |
| 16.     | Ain Khaled Gate Compound Villa 11                                                   | Sandwich Panel Cladding and Steel Gate for Store                         | Mrs.Oktavina                    |





### Some of our On- Going / Completed Projects



| Sl. No: | Project Name                                                                              | Nature of work                                                                         | Client /Contractor                          |
|---------|-------------------------------------------------------------------------------------------|----------------------------------------------------------------------------------------|---------------------------------------------|
| 17.     | Pumping Station No: 2 ,Salwa Industrial RPS - Associated Pipe Lines (Kahramaa)            | Supply and Installation of Panic Exit Devices for the Steel Doors                      | Petroserv Limited                           |
| 18.     | Camel House @ Shahaniya                                                                   | Aluminum Doors and Windows                                                             | Al-Majal International                      |
| 19.     | Villa @ Al-Fardan Gardens                                                                 | Steel Handrail, Grills and Gate                                                        | Mr.Abdul Aziz                               |
| 20.     | Kaima Works @ Muaither                                                                    | Aluminum Glazed Door and Window                                                        | Mr.Faisal                                   |
| 21.     | Villas @ Ummsalal Mohammed                                                                | Aluminum Glazed Sliding Doors and Fixed Partitions                                     | Mr. Shail Abdulla                           |
| 22.     | Doha Bank @ Ain Khaled                                                                    | Frameless Glass Partition and Glass Doors                                              | Premier Indecor                             |
| 23.     | Proposed B+G+1 +P Villa + Out Majlis +Covered Parking / Driver Room                       | Aluminum Ceiling Decorative Panels design panels for building elevations               | Mr. Mohammed Al-Kaabi                       |
| 24.     | Container Coffee Shop at Duhail Night Market                                              | Metal and Glazing Works with Container Modification                                    | Private Client                              |
| 25.     | New Port NPP-0076                                                                         | Stainless Steel Cover and Cladding works                                               | International Trd. & Cont.                  |
| 26.     | Camel House @ Shahaniya                                                                   | Parkin Shade (KWIK SPAN)                                                               | Al-Majal International                      |
| 27.     | Doha Bank Accommodations @ Various Locations                                              | Aluminum Kitchen Cabinets                                                              | Premier Indecor                             |
| 28.     | New Port NPP-0076                                                                         | Aluminum Cladding Works                                                                | International Trd. & Cont.                  |
| 29.     | Warehouse Mezzanine Works @Sailiyah                                                       | Steel Structure Mezzanine , Steel Stair with handrails                                 | Signal Business Solutions W.L.L             |
| 30.     | Training Sites @ Sailiyah Sports Club for Supreme Committee                               | Sliding Steel Gates                                                                    | Al Nakheel Landscapes                       |
| 31.     | Training Sites @ Locations - Qatar University , Doha Golf, Al-Wahda for Supreme Committee | Checkered Plate trench Cover Platforms                                                 | Al Nakheel Landscapes                       |
| 32.     | Thomas Clinic @ Al-Saad                                                                   | Glass Cabinets                                                                         | Penta Furniture                             |
| 33.     | Dukhan Air Base - TAB                                                                     | Mess Hall Steel Handrails                                                              | Advanced Construction Technologies -Bahadir |
| 34.     | Mess and Kitchen for Land Forces at Duhailiyat , Qatar Armed Forces                       | Stainless Steel Handrails , Stainless Steel Corner Guards, Stainless Steel Kick plates | Nasser S Al-Hajri Industrial Contracting    |



### Some of our On-Going / Completed Projects



|     |                                                                    |                                                    |                                                 |
|-----|--------------------------------------------------------------------|----------------------------------------------------|-------------------------------------------------|
|     |                                                                    |                                                    |                                                 |
| 35. | Sharq Village @ Corniche                                           | Steel Framed Glazed Windows                        | Premier -Hi Tech Engineering                    |
| 36. | Mess and Kitchen for Land Forces at Duhailiyat ,Qatar Armed Forces | Mirror @ Wash area                                 | Nasser S Al-Hajri Industrial Contracting        |
| 37. | Sharq Village @ Corniche                                           | Boundary Wall Decorative Steel Gate                | Premier -Hi Tech Engineering                    |
| 38. | NPP-0076 Hamad Port Ocean Blue                                     | Aluminum Flashing works @ MDRC and PIC Area        | Salam Technology                                |
| 39. | Dukhan Air Base - TAB                                              | Portable Cabin for Medical Facility                | Advanced Construction Technologies ACT -Bahadir |
| 40. | Training Sites @ Locations - Qatar University                      | Sliding Steel Gates – Galvanized                   | Al Nakheel Landscapes                           |
| 41. | Birqat Al Awamer for Manateq                                       | Boundary Wall grills and Sliding Steel Gates       | Al-Zawahad Trading and Cont.                    |
| 42. | Zaatar @ Rayyan                                                    | Entrance glass Doors and glass Partitions          | Al-Majal International                          |
| 43. | Haweila Villa @ Shamal                                             | Mirror and Glass Works                             | SMEET Precast W.L.L                             |
| 44. | Training Sites - Qatar University                                  | Trench Cover Chequered Plate Works                 | Inelt Trading and Contracting                   |
| 45. | Dukhan Air Base - TAB                                              | Ware house Sliding steel Doors Maintenance         | Advanced Construction Technologies ACT -Bahadir |
| 46. | 11GC00006 Lusail Ready Mix Plant                                   | Aluminum and glazing Works                         | SMEET Precast W.L.L                             |
| 47. | Oryx GTL MOC 601                                                   | Mirror Works                                       | Nasser S Al-Hajri Industrial Contracting        |
| 48. | 11GC00006 Lusail Ready Mix Plant                                   | Steel Structure 1 <sup>st</sup> Floor office rooms | SMEET Ready mix W.L.L                           |
| 49. | Kitchen Cabinets for Villas /Flats under GAMA                      | Kitchen Cabinets in Aluminum                       | Century 21                                      |
| 50. | 11GC00006 Lusail Ready Mix Plant                                   | Car Park Shades                                    | SMEET Ready mix W.L.L                           |
| 51. | NPP-0076 Ocean Blue Project –Hamad Port                            | Stainless Steel Handrails                          | Salam Technology                                |
| 52. | NPP-0076 Ocean Blue Project –Hamad Port                            | Steel Stairs with Platforms and handrails          | Salam Technology                                |
| 53. | Steel Grills protection on Building Elevations                     | Window Grills and Curtain Wall Grills              | Qatar General Organization for Standardization  |





### Some of our On- Going / Completed Projects



| Sl. No: | Project Name                                                                            | Nature of work                                                                       | Client /Contractor                       |
|---------|-----------------------------------------------------------------------------------------|--------------------------------------------------------------------------------------|------------------------------------------|
| 54      | New Hotel @ Al-Saad –The Chef House                                                     | Entrance Glass Doors Internal glass Partitions ,Mirror works                         | The Chef House - Matrix International    |
| 55      | The Soldiers Mess and Non Commissioned Officers (NCO) Building –ISF Headquarters Duhail | Aluminum Louver Doors                                                                | Bojamhoor Trading and Contracting        |
| 56      | Proposed Al-Dana Hypermarket @ Bin Mahmoud                                              | Shelves -Metal and glass Works                                                       | Premier Indecor                          |
| 57      | ISF Headquarters – Duhail<br>Oil and Greece interceptors                                | Chequered Plate Cover works                                                          | Bojamhoor Trading and Contracting        |
| 58      | Training Sites - Qatar University                                                       | Steel Bollards                                                                       | QU / Al Nakheel Landscapes               |
| 59      | Dragon Mart office @ Sanaya                                                             | Glass Partitions and ACP Cladding Panels with Steel and Aluminum Supports            | Viva Flora                               |
| 60      | Roof Ventilation Louvers @ –Plant workshop                                              | Aluminum Louvers in Powder Coated finish (Roof Mounted Natural Ventilation fixation) | Gulf Contracting                         |
| 61      | Lusail Marina -50 ,Miscellaneous requirements                                           | Bicycle Rack , Handrails, Shades, Platforms , Access Door                            | Qatar Trading Agency                     |
| 62      | Renovation of Building –Qatar Airways @ Muntazah                                        | Aluminum handrails @ Qatar Airways Building @ Muntazah                               | Capstone Property                        |
| 63      | Haweila Villa @ Shamal                                                                  | Chequered Plate works @ Stair                                                        | SMEET Precast W.L.L                      |
| 64      | Border Sector And 1st Squadron Support HQ Building @ KARAANAH                           | Stainless Steel Handrails (Floor Mounted type and Wall Mounted Type)                 | Nasser S Al-Hajri Industrial Contracting |
| 65      | Bakery Renovation @ Rayyan - Lazurd Events                                              | Aluminium Windows and Doors                                                          | Doha Group                               |
| 66      | Coast Guard Station Umm-Bab                                                             | Stainless Steel Wall Mounted Handrails                                               | ALBAI Trading & Contracting WLL          |
| 67      | Private Villa @ Markhiya                                                                | Stainless Steel Handrails with Glass Balustrades in Sandblast designs                | MAGHRIBIYA INSHAHATH Company             |
| 68      | The Soldiers Mess and Non Commissioned Officers (NCO) Building –ISF Headquarters Duhail | Steel Framed Cushioned Benches                                                       | Bojamhoor Trading and Contracting        |
| 69      | Out-House @ Al-Bahar Compound Dafna                                                     | Aluminum Doors and glazed Windows                                                    | MAGHRIBIYA INSHAHATH Company             |



### Some of our On-Going / Completed Projects



| Sl. No: | Project Name                                                                            | Nature of work                                                                | Client /Contractor                       |
|---------|-----------------------------------------------------------------------------------------|-------------------------------------------------------------------------------|------------------------------------------|
| 68      | The Soldiers Mess and Non Commissioned Officers (NCO) Building –ISF Headquarters Duhail | Steel Framed Cushioned Benches                                                | Bojamhoor Trading and Contracting        |
| 69      | Out-House @ Al-Bahar Compound Dafna                                                     | Aluminum Doors and glazed Windows                                             | MAGHRIBIYA INSHAHATH Company             |
| 70      | Sayyar Head Office renovation @ Salwa                                                   | Steel Stair ,SS handrails , Chequered Plate platforms , Steel decorative Door | Sayyar Trading Co. W.L.L                 |
| 71      | Private Villa @ Saliya                                                                  | Car Park Shade and Water Tank Shades                                          | Client -Abdulla                          |
| 72      | Doha Port Development Project                                                           | Stainless Steel Bollards                                                      | Al Nakheel Landscapes                    |
| 73      | Border Sector And 1st Squadron Support HQ Building @ KARAANAH                           | Mirrors @ Toilet and Wash Area                                                | Nasser S Al-Hajri Industrial Contracting |
| 74      | Flats @ Riffa                                                                           | Kitchen Cabinet works                                                         | Servico                                  |
| 75      | Private Villa @ Abu Hamour                                                              | Steel Gates Sliding and ,Hinged , Fixed Steel Grills                          | Mr. Khalifa Al Sulaiti                   |
| 76      | Boundary Walls @ College of North Atlantic CNAQ                                         | Fencing Grills and Automatic Sliding Steel Gates                              | SMEET Ready mix W.L.L                    |
| 77      | Renovation of Shop @ Barwa Wakra – ASFOUR CRYSTAL                                       | Steel Framings and Supports                                                   | Abdul Jaleel Abdul Ghani Nasser W.L.L    |
| 78      | Krasiva Salon @ Al-Saad                                                                 | Steel Structure Mezzanine and Decking                                         | Nabina Interiors                         |
| 79      | Krasiva Salon @ Al-Saad                                                                 | Steel Stair ,Handrails , Frameless Glass Doors                                | Nabina Interiors                         |
| 80      | Villas @ Ain Khaled                                                                     | Aluminum Kitchen Cabinets                                                     | General Authority of Minor Affairs       |
| 81      | Doha Port                                                                               | Stainless Steel Bollards                                                      | Al Nakheel Landscapes                    |
| 82      | G + 2 Flats @ Bin Omran                                                                 | Aluminum Kitchen Cabinets                                                     | Al-Mukhtar Trad. And Cont.               |
| 83      | Flats @ Riffa                                                                           | Aluminum Kitchen Cabinets                                                     | General Authority of Minor Affairs       |
| 84      | Villas at Muraikh                                                                       | Aluminum Kitchen Cabinets                                                     | Doha Real Estate                         |
| 85      | Const. of 3Nos. bus depots @ Various Sites                                              | Steel Sutter Moulds for Concrete                                              | Bojamhoor Trading and Contracting        |
| 86      | Filafalgi Restaurant @ Bank Street                                                      | Aluminum Glazed Curtain Walls and Doors                                       | Nabina Interiors                         |
| 87      | Const. of 3Nos. bus depots @ Various Sites                                              | Galvanized Steel Bollards                                                     | Bojamhoor Trading and Contracting        |
| 88      | Boundary Wall Grills at Medical Commission                                              | Steel Boundary Wall Grills                                                    | AG Middle East                           |
| 89      | Training Sites @ Locations - Qatar University ,                                         | Steel Bollards                                                                | Al Nakheel Landscapes                    |
| 90      | HH AMIR SHEIKH HAMAD BIN KHALIFA AL THANI- RAS MELAIJI-RAS-LAFFAN                       | Sliding Steel Gates                                                           | Bright Trading and Contracting           |
| 91      | Qatar Free Zone - Doha Crafts                                                           | Steel framed Aluminum Louvers @ AC outlet areas                               | MEP Enterprises                          |

and many more...



## Project Highlights



1. Project :TAB Dukhan.  
Scope: Medical Unit Portable Cabin



2. Project :Private Villa at Umm Salal.  
Scope: Car Park Shade



3. Project :Villa at Umm Esbaira.  
Scope: Decorative Entrance Polycarbonate Shades



4. Project : RayyanZaatar.  
Scope: Shop front glass Partition and Door



5. Project : Villa at Umm Esbaira.  
Scope: Arched Aluminum glazed Doors



6. Project : Qatar University Training Pitches.  
Scope : Double leaf Sliding Steel gate



7. Project : TAB - Dukhan.  
Scope: Mess Hall Steel Handrails



## Project Highlights



8. Project : Villa at Umm Esbaira.  
Scope : Polycarbonate Roofing Shades



9. Project : Ware House at Birkat Al Awamer.  
Scope : Double leaf Sliding Steel gate /grills



10. Project : Shop front glass Partition and Door.  
Scope : RayyanBeauty Clinic



11. Project : Development of (ISF) Camp at Al Duhail.  
Scope : GI Chequered Plate cover



13. Project : Development of (ISF) Camp at Al Duhail.  
Scope : Gas Tank area Aluminum Louver Doors.



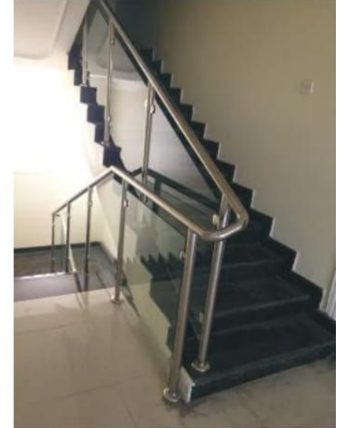
14. Project : Smeat Ready Mix Lusail Office.  
Scope : Steel Structured Office Rooms



## Project Highlights



16. Project : Villa at Abu Hamour.  
Scope: Aluminum Fiber Kitchen Cabinets



17. Project : Villa at Gharafa.  
Scope : SS Handrails & Glass Balustrades



18. Project : Villa at Al-Kheesa.  
Scope: Decorative Ceiling Panels



19. Project : Villa at Huweila Shamal  
Scope: Decorative Mirror works



20. Project : NPP- 0076 Ocean Blue –New Port.  
Scope : Access Stair handrails and Platform



21. Project : NPP- 0076 Ocean Blue –New Port.  
Scope : Aluminum Cover around Ducting



## Project Highlights



22. Project : NPP- 0076 Ocean Blue –New Port.  
Scope : Stainless Steel Handrails at PIC



23. Project : TAB Dukhan.  
Scope : Warehouse Sliding Door maintenance



24. Project : NPP- 0076 Ocean Blue –New Port.  
Scope : Aluminum Flashing Cover  
around Parapet and Duct



25. Project : Training Pitches at QU,  
Sailiya, Al-Wahda, Doha Golf.  
Scope : Chequered Plate Trench Covers  
@ Electrical Rooms



26. Project : Private Villa @ Al-Nasr.  
Scope : Arched frameless  
and framed glass Partition, Windows



27. Project : Smeet Ready Mix Lusail Office.  
Scope : Office room Gypsum ceiling Works

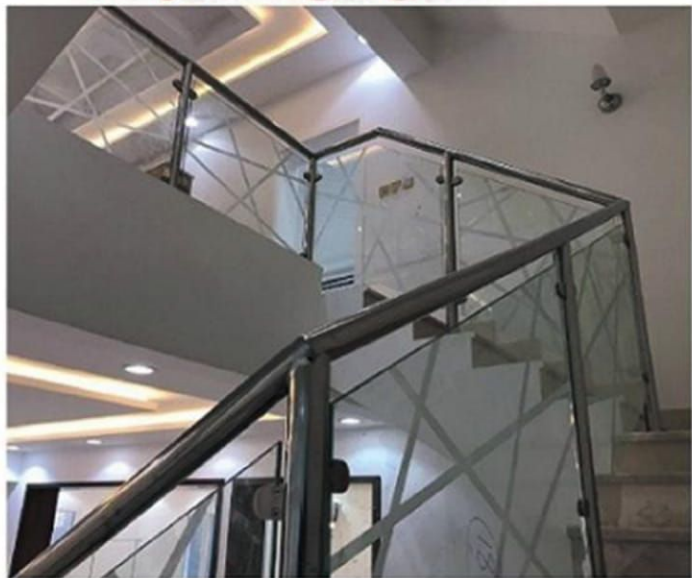


28. Project : Doha Bank Staffs Accommodation  
Scope : Aluminum Fiber Kitchen Cabinets





## Project Highlights



29. Project : Private Villa @ Al-Kheesa  
Scope : Stainless Steel Handrails with Sandblasted Glass Balustrades



30. Project : Renovation of Office @ Salwa Road  
Scope : Steel Stair with SS Handrails and glass Balustrades



31. Project : Private Villa @ Sailiya  
Scope : Decorative Steel gates and Kwik Span Car Park Shades



32. Project : Private Villa @ Sailiya  
Scope : Decorative Steel gates



33. Project : Private Villa @ Sailiya  
Scope : Kwik Span Car Park Shades

34. Project : Al-Bahar Compound @ Dafna  
Scope : Protection Steel Gates @ Pool Area

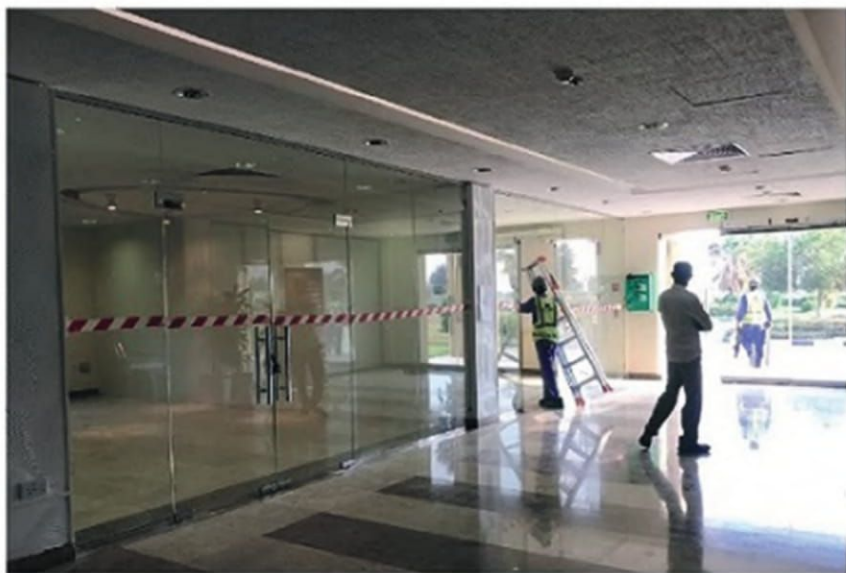




## Project Highlights



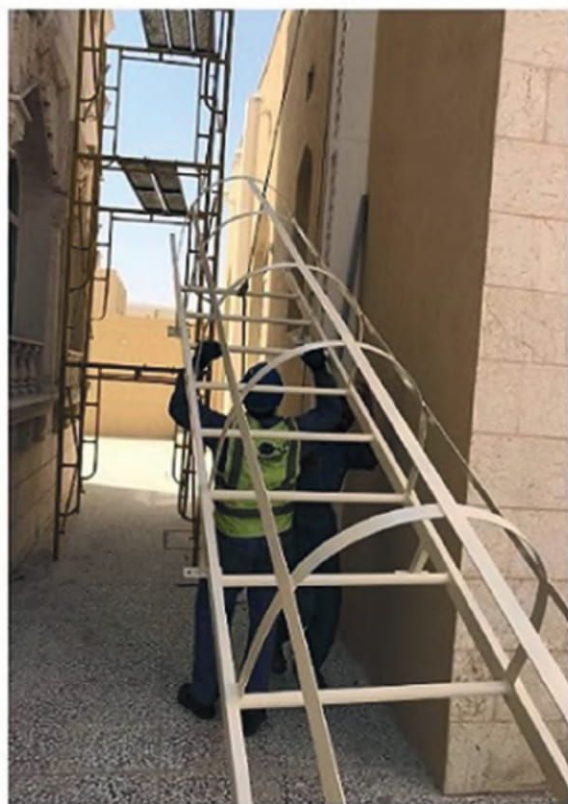
35. Project : Doha Port Renovation  
Scope : Stainless Steel Bollards SS 316L



36. Project : Doha North Sewage Treatment Plant (DNSTP-Ummasala)  
Scope : Office Glass Partitions and Glass Doors



37. Project : Metal Works for Qatar Standards @ Mesaimeer  
Scope : Windows & Curtain Wall Grills

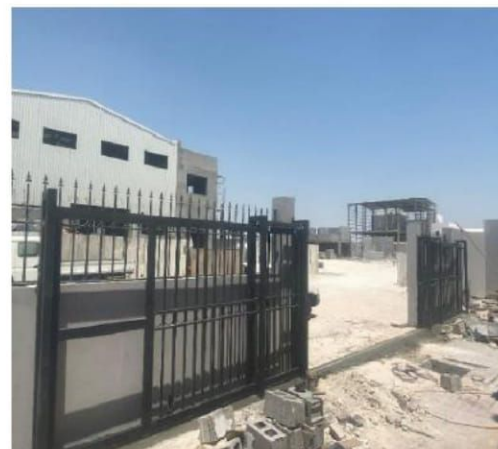
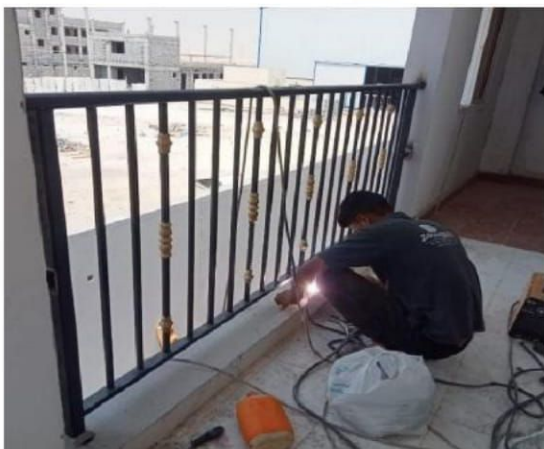
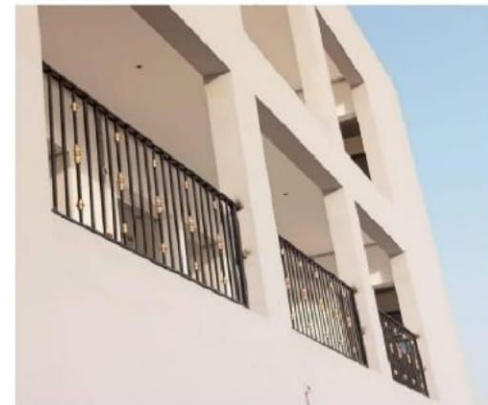
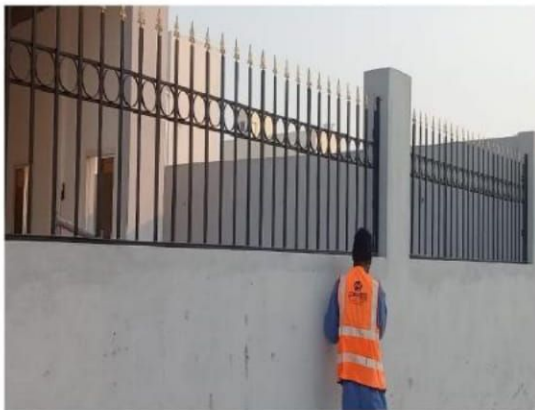


38. Project : G + 2 Construction of Villa @ Saliya  
Scope : Caged Ladder for Majlis

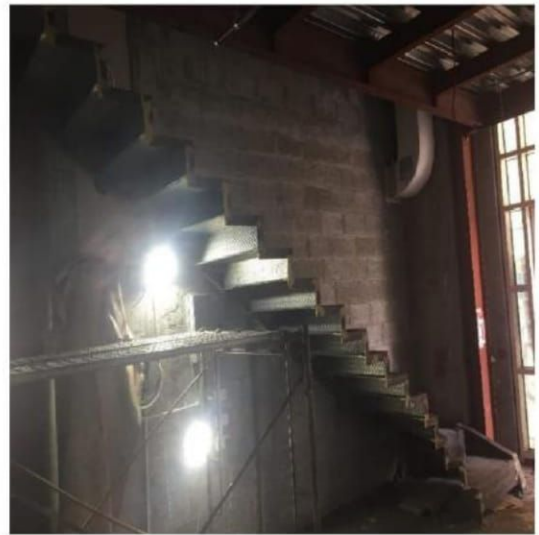
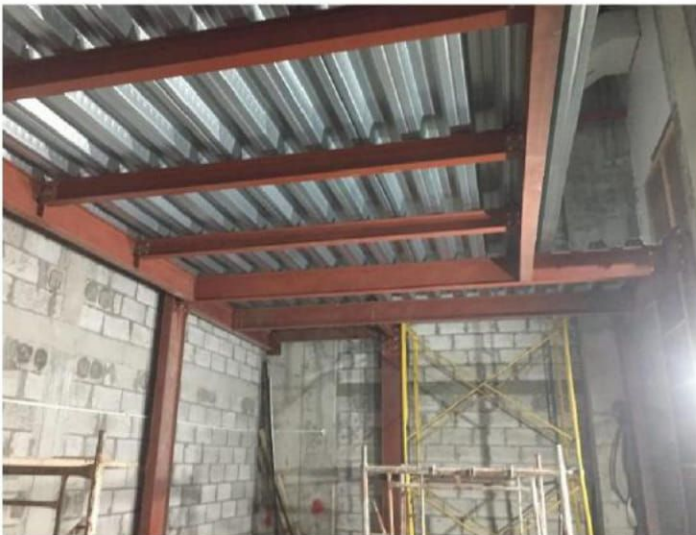


## Project Highlights

39. Birkat Ware House Metal Works



## Project Highlights





## Project Highlights



## Project Highlights

### 40. Birkat Ware House Metal Works

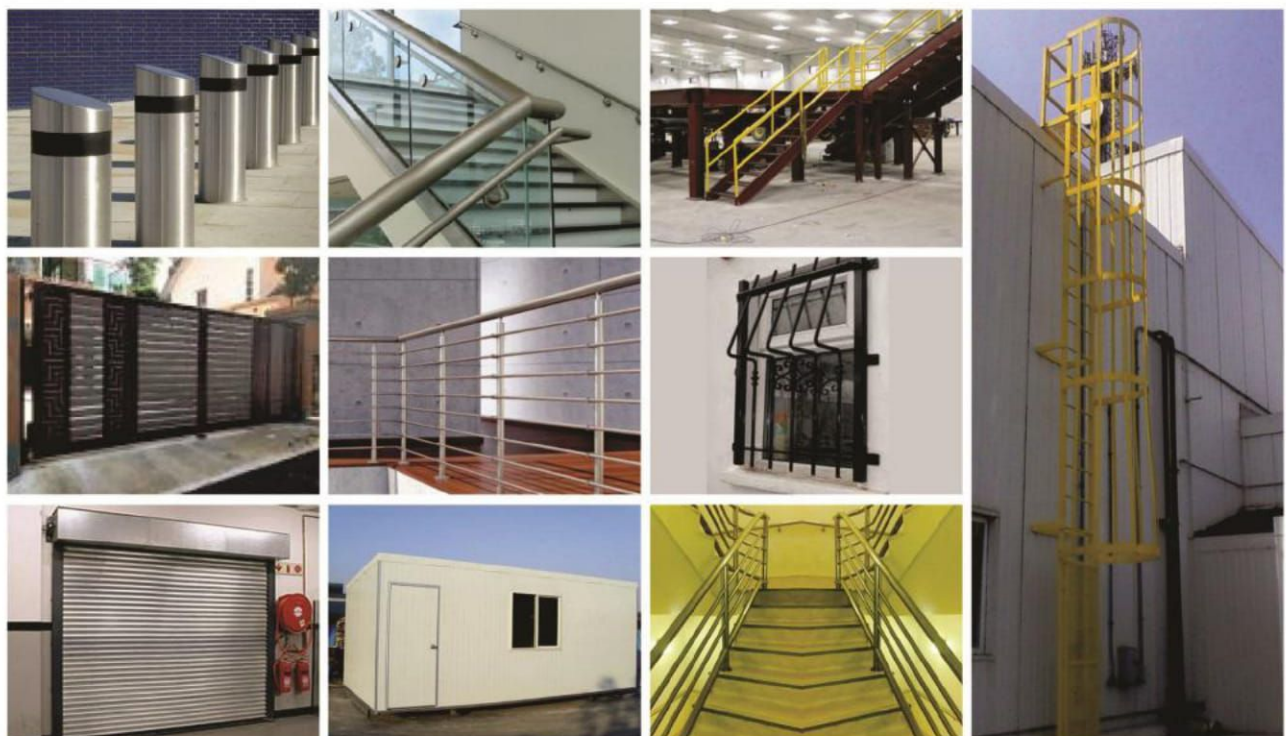




## Aluminium Works



## Steel Works





**Location :**

Street No: 100 , Zone No: 56  
Building No: 43 , Ain Khaled , Doha Qatar

**Contact us :**

Mob :+974 3071 4414

Tel/Fax : +974 4411 9138

www.zoomfab-qa.com ✉ admin@zoomfab-qa.com

follow us on :   